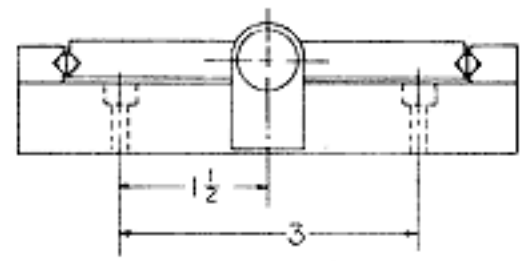
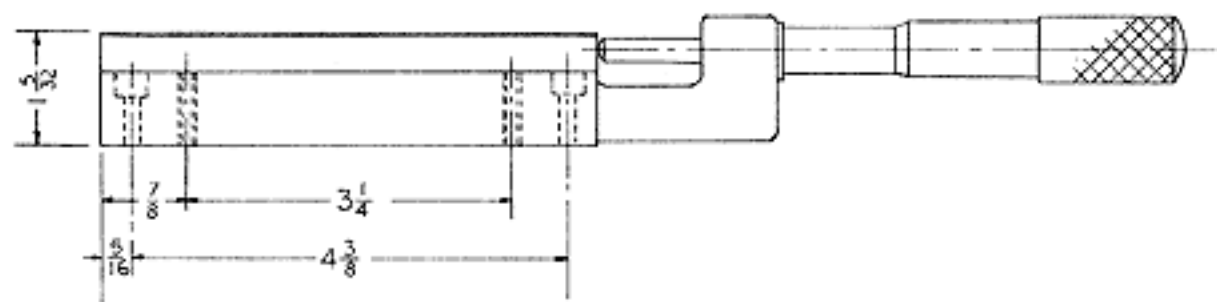


1. SLIDE SHOWN AT CENTERED POSITION.
2. SLIDE MOVES 1" IN EITHER DIRECTION.
3. TOTAL TRAVEL OF SLIDE 2"
4. SLIDE IS SPRING LOADED AGAINST MICROMETER SPINDLE.
5. MICROMETER GRADUATED 0 TO 2".
6. SLIDE AND BALL RACES — O1 TOOL STEEL HARDEN 60-62 RC
7. CASTING — ALUMINUM ALLOY



LINE TOOL COMPANY		
ALLENTOWN, PA.		
SCALE: FULL	APPROVED BY:	DRAWN BY: <i>G. J. H.</i>
DATE: 7-16-80		
MICROPOSITIONER MODEL-104		
TRAVEL 2"		DRAWING NUMBER M-1206